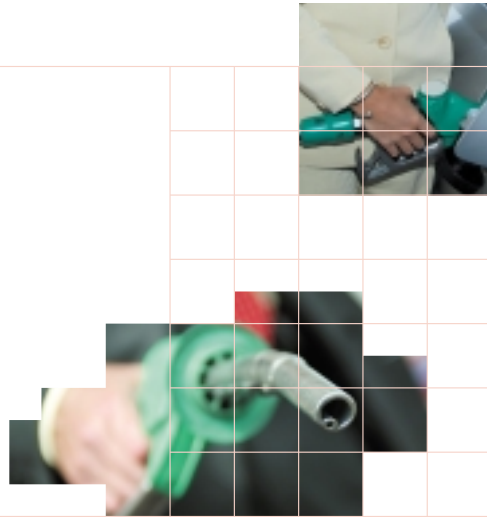


Red Jacket Submersible Turbine Pumps

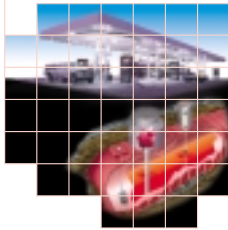
Pressure technology for the modern
service station

Red Jacket
Submersible
Turbine
Pumps



Pressure technology for the modern service station

Pressure technology is used to pump petroleum at over 40% of the 550,000 service stations worldwide. The use of pressure technology is growing every day, as it offers many benefits over suction, especially with the increasing requirements placed on modern station designs and throughput.



Flexible station layout

The number of service stations across Europe has been declining for a number of years, but the total number of nozzles dispensing fuel remains constant. New sites are becoming larger with increased facilities such as restaurants, retail shops and carwashes.

Red Jacket submersible pumps allow much greater flexibility in station layout. Tanks can be located as far from the dispenser islands as needed, without any significant loss of performance at the nozzle. This also allows for increased storage capacity and the use of off-set filling arrangements.

Conversely, in city environments station layout is often restricted by available space. Using Red Jacket submersible pumps will allow the use of much smaller footprint dispensers, saving precious space for the retail shop, carwash or increased car parking.

Lower installation and maintenance costs

Pressure systems require only one pressure line per product to supply all dispensers, whereas each suction dispenser requires its own line per product from each tank. For example, a typical four dispenser site may use up to three times the amount of piping of a comparable station using Red Jacket submersibles.

Using pressure technology means there are less motor/pumping systems working at the station. Less moving parts to break down means lower maintenance costs. Failure rates of Red Jacket submersible pumps are extremely low, among other reasons because they operate inside the tank under ideal working conditions, submersed in fluid which constantly cools and lubricates the motor.

The use of Red Jacket Submersible Technology can reduce your total cost of ownership.



Eliminates vapour lock

The biggest problem with suction technology is its susceptibility to vapour lock. Not only will it stop the dispenser from operating but it can also damage the dispenser, leaving it out of action until it can be repaired. Higher ambient temperature, changing fuel formulations, higher altitude, larger and deeper storage tanks and longer pipe runs all contribute to the likelihood of vapour lock.

Red Jacket pressure technology eliminates this issue completely.

Line leak detection

Veeder-Root TLS-350 series tank monitoring systems integrate seamlessly with the Red Jacket submersibles. Each time a dispense-cycle ends, the lines are automatically tested for substantial leaks (11.4 litres per hour). The lines can also then be precision tested (0.38 or 0.76 litres per hour) at user defined intervals for enhanced risk management.

If a leak is detected, the tank gauge can be programmed to automatically shut down the dispenser. These tests are designed to exceed the US EPA leak detection standards that are used across Europe. Where required, Veeder-Root can provide additional sensor monitoring for tank and dispenser sumps, double wall storage tanks or monitoring wells.

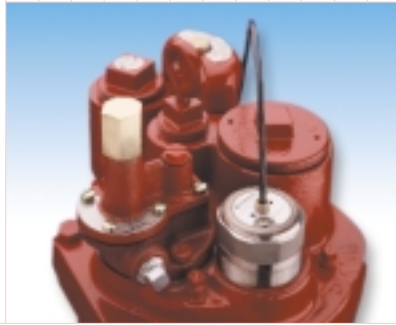
So you can use pressure technology with absolute peace of mind, knowing that your complete service station - lines, tanks and other sensitive areas - is being monitored by the best leak detection technology available today.



Red Jacket
Submersible
Turbine
Pumps

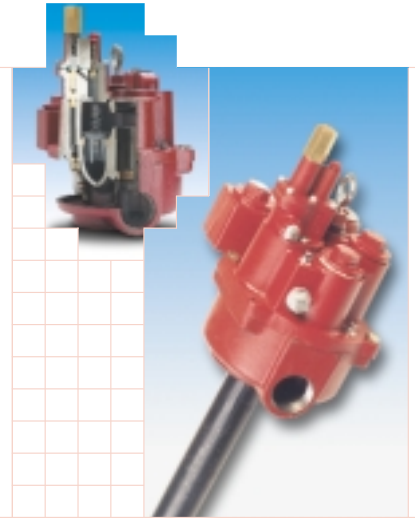
The Red Jacket product line

Veeder-Root offers a full range of Red Jacket Submersible Turbine Pumps for all retail and commercial fuel pumping applications.



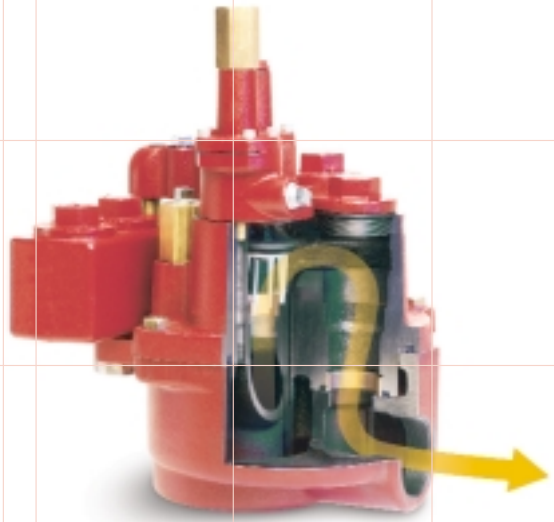
Standard 4" pump

Fixed Speed Motor delivering 0.75 or 1.5hp. Available in 1 & 3 phase, 50 Hz or 60 HZ models. Pumps maximum capacities from 150 LPM to 300 LPM*. Compatible with diesel and petroleum with up to 20% alcohol.



Quantum 4" pump

The quantum version of the 4" pump has a redesigned manifold to reduce the flow restrictions through the pump head, which increases the flow rate in more demanding situations.



The X3, X4 and X5

The X3, 4 or 5 series high pressure pumps are designed specifically for systems with high pressure drops caused by excessively long pipe runs or balanced / Healy assisted vapour recovery systems. The X models generate 200 LPM* at operating pressure.

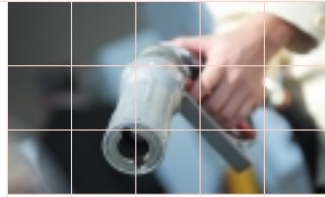
Both the Quantum and Quantum X pumps can be supplied as variable length models, giving increased flexibility and reduced installation time.

Maxxum BigFlo

Heavy duty pump for high volume applications. Ideal for truck stops, bulk plants, depots, marinas and airports. Despite its size it is very easy to service. Available in 3 and 5 HP, 50 or 60 HZ models. Delivers 600 LPM to 1000 LPM* flow Rate. Compatible with diesel and petroleum with up to 20% alcohol content.

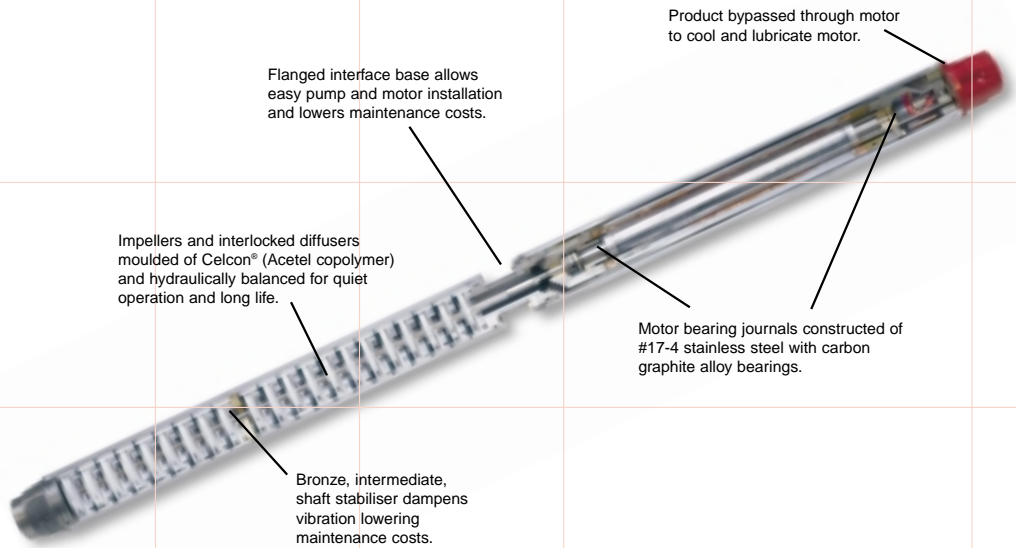
*Flowrate at manifold

Red Jacket
Submersible
Turbine
Pumps



LPG pumps

LPG is a fuel type in ever increasing demand throughout the world. Veeder-Root offer two different pumps for LPG applications with capacities from 50 LPM to 200 LPM*. The pump and motor are separate components to allow easy field servicing.



Gilbarco Veeder-Root offer end-to-end solutions for LPG, from pump to dispenser to tank inventory monitoring.

*Flowrate at manifold



Veeder-Root - Brief History

1898

Veeder Cyclometer - the standard in the cycling industry

1928

Veeder manufacturing & Root Co. merge to form the largest manufacturer of counting & computing devices

1930

Veeder-Root counters incorporated into fuel dispensers

1940's, 50's & 60's

Veeder-Root counters incorporated into fuel dispensers

1981

Veeder-Root TLS-100

1990

Veeder-Root PLLD. Over 27,000 lines working in the field

1994

Veeder-Root TLS-350R

1996

Veeder-Root TLS-PC

1997

Simplicity Petroleum Data Services

1998

Fuel Logistics Services, from Simplicity

1999

Inform & TLS-PC-32

2000

TLS-NT
USTMAN acquisition

2001

Red Jacket acquisition

2002

Gilbarco merger



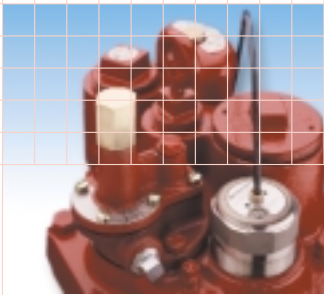
For more information on
Red Jacket Submersible Turbine Pumps contact us at:

+44 (0)208 392 1355

email: sales@veeder.co.uk

or visit:

www.veeder.com



Red Jacket
Submersible
Turbine
Pumps