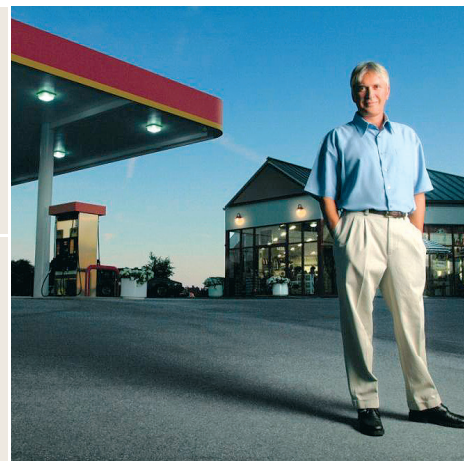
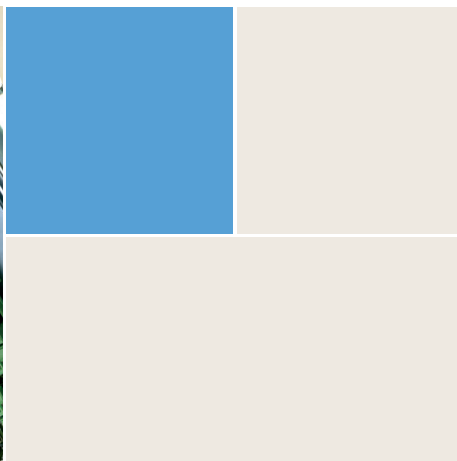


# PSS 5000 Forecourt Controller

Flexibility, connectivity and reliability



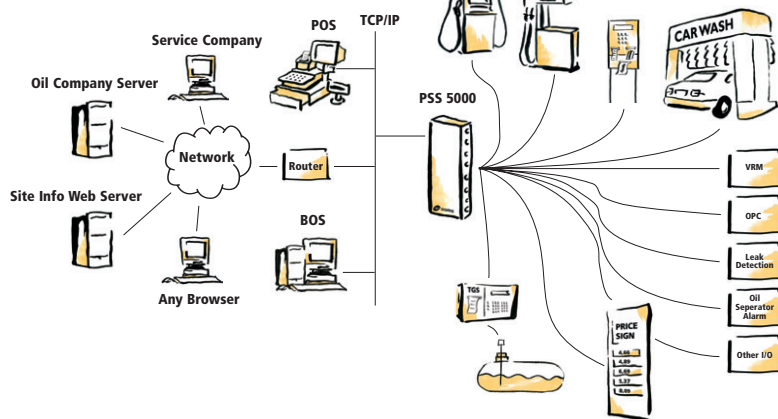
Doms A/S · Formervangen 28 · DK-2600 Glostrup, Denmark  
Tel. +45 4329 9400 · Fax +45 4329 9404 · sales@doms.dk · www.doms.com

## Efficient control and management of the petrol station forecourt

### Combine POS and forecourt equipment of any brand and make

PSS 5000 is designed to provide oil companies with the flexibility to mix POS and forecourt equipment of any brand and make. This means that the oil company can combine any POS system with dispensers from e.g. Gilbarco, Wayne or Tokheim.

As a system component in the POS environment, PSS 5000 overcomes the complex differences between a supermarket and a petrol station, integrating control of all types of forecourt equipment with the POS, BOS and head office systems.



*PSS 5000 functions as a central controller with interfaces to all forecourt equipment and a TCP/IP link to the rest of the world.*

### Connects to the rest of the world

PSS 5000 offers a broad range of connectivity features such as direct network access to detailed technical alarms, environmental data and inventory figures.

PSS 5000 is the latest in the series of PSS controllers and builds on more than 20 years of experience. It is today used on more than 25,000 petrol stations in more than 50 countries.

### Interfaces to most forecourt equipment

PSS 5000 supports numerous types of forecourt equipment, including:

- Pumps (more than 40 different pump types, including IFSF)
- Payment terminals (cards and/or bank notes)
- Tank gauge systems
- Price poles
- Car wash machines
- Vehicle identification systems
- Vapour recovery systems
- Overfill prevention systems
- I/O alarm panels (such as oil separator alarms)
- Fall-back consoles (if the POS system is down)



**We take ownership of the business logic**

PSS 5000 is more than a forecourt interface and a connection box. It also includes the software application, which handles the business logic for controlling the petrol station forecourt. This means that the POS draws entirely on the experience and knowledge of Doms and therefore only needs to do little work in this area.

The main advantages are:

- Easy POS integration of complex forecourt business logic.
- Usage of a stable and well-proven forecourt application.
- Flexibility for retailers to perform independent updates of both POS and forecourt equipment.

**Easy POS integration via TCP/IP**

For implementation and test a PSS 5000 development package is available, including full documentation, a PSS 5000 system, simulators for pumps, tank gauge systems, payment terminals and price poles, diagnostic tools and Windows interface components.

More than 60 POS suppliers have already interfaced PSS 5000.

**Matches all petrol stations, regardless of design and size**

PSS 5000 is fully modular in terms of hardware and software. This enables e.g. a small system, handling one POS terminal and one type of pump to be upgraded to a complex system, capable of handling an

unmanned site with a card server and pumps from different manufacturers, together with a price pole and a payment terminal.

**IFSF support**

Since 1996 PSS 5000 has implemented interfaces to the existing IFSF protocols for pumps, price poles and tank gauges.



**All in one box**

Besides functioning as a forecourt controller, the PSS 5000 hardware also acts as an EMC and LVD approved connection box for the wiring of the forecourt. This means that all cables from POS, BOS and the forecourt can be connected in the controller box.

**Outdoor payment solutions**

PSS 5000 integrates equipment and applications from different manufacturers for almost any type of solution, including:

- Intelligent and unintelligent terminals
- Keyboards and secure PIN entry device's
- External or embedded payment servers
- POS and head office interfaces

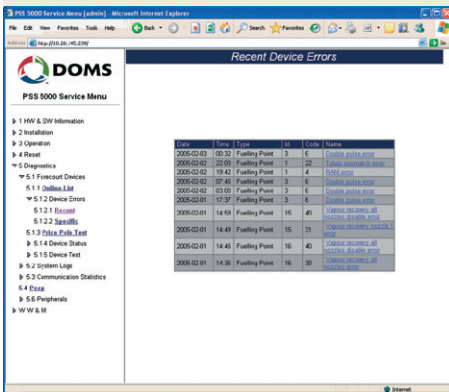


*PSS 5000 unit opened (to the left) and closed (to the right). The CPU board and hardware interface modules are mounted inside the controller box, where POS and the forecourt equipment are connected.*

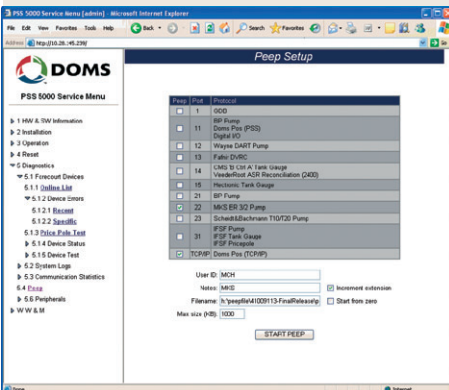
## Remote Service Facilities

Each controller contains an embedded web server. It is a cost and time reducing feature for maintenance and configuration, both on-site and remote.

- Ensures that technicians are only sent to the site when required.
- Remote diagnostics can be conducted via the Internet and by professionals
- Software uploads and downloads of both application and configuration.



A feature of the web sever is the error and event log from all forecourt devices.



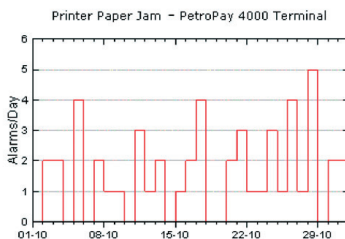
A feature of the web server is the facility to log communication with all POS and forecourt devices connected. This is a very efficient tool for diagnostics and trouble-shooting.

CURRENT INVENTORY STATUS												
Date	Time	Tank	Product	Capacity	Volume	Ullage	Low	Low Low	Tank Status	24h Avg	Low Low in	Order Vol.
19-11-2003	01:12	1	Diesel	15.500	9.174	6.326	8.500	5.000		3.297	1,1 days	6.000
19-11-2003	01:12	2	UNL95	11.451	10.549	902	2.500	1.600		609	14,8 days	0
19-11-2003	01:12	3	UNL95	15.500	10.043	5.457	5.000	3.000		2.066	3,6 days	3.000
19-11-2003	01:12	4	UNL92	7.602	3.799	3.803	2.000	1.400		375	6,4 days	3.000
19-11-2003	01:12	5	Ultra 95	15.500	3.341	12.159	2.000	1.200		165	12,9 days	3.000
Update Now											Order	15.000

Via the host interface wet stock data can be collected in next to real-time from PSS 5000. This could be from a mixture of tank gauges.

## Optional host interface for data and alarm collection

PSS 5000 is ideal as data provider to host systems such as alarm centrals or delivery planning systems. It has an XML based interface and collects data and alarms from all the connected forecourt equipment



Via the host interface all types of alarms can be collected from PSS 5000.

## Reliability at low cost

PSS 5000 is a proven high-performance embedded system offering fast transaction handling and a low failure rate. Compared to a PC-based system, PSS 5000 ensures a stable system for continuous operation at low cost.



## Approvals and compliance

PSS 5000 has been designed to comply with the different W&M Approvals around the world. The W&M part is isolated in a special module. This means that the controller can be updated with new functionality without the need of a new approval.

W&M approvals have already been issued in a large number of countries, and as the first forecourt controller PSS 5000 was tested and deemed compliant with the OIML recommendations R-117.



© 2005 Doms A/S  
 Formervangen 28 · DK-2600 Glostrup, Denmark  
 Tel. +45 4329 9400 · Fax +45 4329 9404  
 sales@doms.dk · www.doms.com